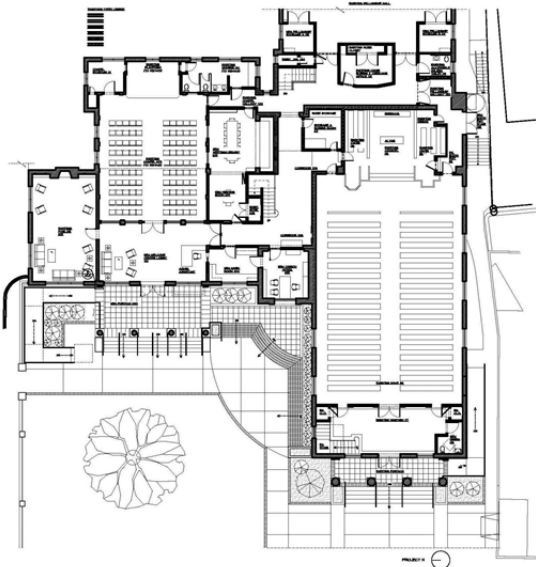


2 NORTH ELEVATION  
SCALE: 1/8"=1'-0"



1 WEST ELEVATION  
SCALE: 1/8"=1'-0"



FIRST FLOOR PLAN  
SCALE: 1/8"=1'-0"

*“The more that our core is passionate and active, the more the members of our broader congregation will be interested in strengthening their commitment. The more interest that is generated in the congregation, the more the broader community becomes interested. Thus, evangelism and church growth become the **result** of a committed community, not the **goal** of the community.” –Oct. 2014 A Guiding Statement about the Journey Ahead adopted by the session of SAPC.*

### Who We Are and What We Hope

Demonstrating the Kingdom of Heaven to the World, Selwyn Avenue Presbyterian Church will continue to be an authentic community marked by the following:

Joy  
 Inviting Hospitality  
 Boundless Care for All Those We Encounter  
 Covenant of Continuous Care for One Another  
 Inter-generational Community  
 The Importance of the Individual  
 Openness and Transparency  
 A Willingness to Have Hard and Honest Conversations  
 Theological Integrity  
 The Sharing of Stories in Our Mission Together  
 Proclaiming the Gospel with How We Live Our Lives

### Where We Have Been and Where We Are Going

- Two sub-committees worked diligently for 9 months before presenting recommendations regarding **personnel** and **facility** needs to the Session.
- In December of 2015 the Session proposed a Capital Campaign to address the needs of our community in a way that is congruent with both our long held identity and our vision for the future.
- Led by many passionate members, the 75th Anniversary Fund Campaign launched in the fall of 2016. Current estimates total 1,850,000.00.
- Selwyn has already received \$993,298 in gifts that are being distributed among areas of need as affirmed by our congregation.



**Today we celebrate the abundant evidence of your commitment and faithfulness.**

#### Personnel

**Goal: Stabilize and secure our high quality staff.**

- Installed Rev. Mary Bowman as a part-time pastor of Mission.
- Installed Rev. Lori Raible as a full-time co-pastor with Rev. Rush Otey.
- Initiated salary adjustments to support shifts.

**Goal: Based on our demographics, invest in and support our robust and growing youth program.**

- Conducted a national search to hire a new full-time youth director, Jay Masanotti.

#### Communications

**Goal: Improve communication systems to reflect the needs of our leadership and the patterns of a diverse membership, while reflecting who we are in the way we communicate.**

- Adopted a new logo and branding (by Gale Haruta) reflecting our identity and vision.
- Hired Jessica Masanotti, part-time Communications Director.
- Researched, purchased, and implemented new membership and financial databases, ShelbyNext.

**Goal: Alleviate communication frustrations experienced by staff and membership due to outdated systems.**

- Provided membership access to directory and financial management through the ShelbyNext App and online.
- Launched a new website that reflects our identity and function.
- Reformatted the church weekly email.

#### Facility and Property

**Goal: In faith and hope, secure surrounding properties for the future vision and mission of our community.**

- After long and faithful negotiations we purchased the house adjacent to the Bates house, 3019 Selwyn Avenue, for our future vision.
- Removed trees in the yard, and due to the severely dangerous condition of the house, it will be demolished soon.

**Goal: Retire existing debt on the Bates house in order to look ahead.**

- Paid off the existing mortgage in full.

#### Mission

**Goal: Maintain a commitment to the mission of the church through our partnerships in the community and beyond.**

- We have allocated 10% of our 75th anniversary fund to be used specifically for mission purposes.

#### Property and Facilities

**Goal: Address major maintenance needs on our existing property.**

- Replaced the very damaged and leaking roof over major portions of our facility not slated for renovation.

**Goal: Address major building concerns that impact programming, accessibility, and safety, while aligning our facility with who we are. Reclaim the essence of our identity and tradition, as we step into the next 75 years with faith and hope.**

- A group was formed to interview and hire an architect, Charles McClure, of MNM Architects and subsequently a builder, Brett Taylor, of Hopedale Builders.
- The plans have been thoughtfully drawn, prayerfully reviewed and redrawn again.
- A final revision was submitted for review at the beginning of this year and approved.
- We now have the permits to begin construction.