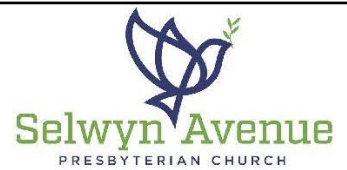


# GRACE ABOUNDS



Dear Fellow SAPC Members,

We have seen God's work this year as we returned safely to in person worship, welcomed new voices to the choir, and witnessed Selwyn children and youth joyfully engage in Vacation Bible School, Montreat Youth Conference, Middle School Mission Retreat, and Appalachia Service Project.

Fall programming is underway with children's choir, new adult classes, youth group, PW circles, Bible studies, mission partnerships, fellowship events and more.

God's grace abounds!

Through the collective support of our church family in last year's Stewardship Campaign, we raised \$778,000, a 24% increase over the previous year (with 64% of the households increasing their pledges)!

With SAPC's new stewardship campaign we are hopeful we can once again increase our total annual giving amount. As disciples of Selwyn Avenue, God calls us to care for the well-being of our church community and make a commitment to fulfill the vision and mission of our church. This vision is felt inside our walls through vibrant worship services and programming, deep meaningful relationships, and outside our walls through important mission work in support of our most vulnerable neighbors.

We recognize there are many 'pulls' on our individual resources and making a gift to Selwyn means allocating your resources differently- but we hope you recognize your faithful gift truly matters- to you as the giver and to the church - no matter the amount.

We look forward to worshipping with you as we commit our pledge to Selwyn and God on Dedication Sunday, October 30. If you are unable to join us that day, pledge cards can be mailed to the church office, or made online at [www.selwynpres.org](http://www.selwynpres.org) or <https://airtable.com/shrlK94Y7x2AuSATA>.

Thank you for your prayerful consideration and commitment to Selwyn Avenue Presbyterian Church.

Stewardship Committee

Grant Armistead, Morgan Liles, Ed Thomas, Lou Waple, JD Yearwood



The point is this: whoever sows sparingly will also reap sparingly, and whoever sows bountifully will also reap bountifully. Each one must give as he has decided in his heart, not reluctantly or under compulsion, for God loves a cheerful giver. And God is able to make all grace abound to you, so that having all sufficiency in all things at all times, you may abound in every good work." **2 Corinthians 9:6-8**



## THE SELWYN SPIRE

November 2022

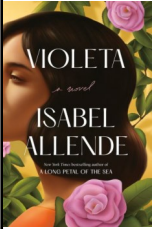
Selwyn Avenue Presbyterian Church  
2929 Selwyn Avenue Charlotte, NC 28209, Tel: 704-372-6836, [www.selwynpres.org](http://www.selwynpres.org)

# CONGREGATIONAL LIFE



## DAYLIGHT SAVING TIME ENDS!

Remember to turn your clock back at 2am on November 6.



## SAPC BOOK CLUB

will meet on November 15, 6:30pm at Sir Edmond Halley's Restaurant to discuss Violetta by Isabel Allende.

Questions, contact [Nancy Bobbitt](#).



The next meeting will be in the Parlor on November 20 after worship.

Please contact Susan Lohr, 704-582-3314 if you have any questions.



## SALT SHAKERS

Sunday, November 6

A mature age social group who no longer have children at home. The group meets the first Sunday evening of the month at a member's home. Members bring a covered dish to share. Questions contact [Malyn Pratt](#).

## THIRD THURSDAY— Pints at the Pub

You are invited to drop by Selwyn Pub between 5:30-7pm on November 17 for a time of fellowship. No need to RSVP, simply come as you are!

## TEXT TO GIVE OR SCAN THE QR CODE

Text 704-734-9818. Enter an amount. The first time you will be prompted to SHELBY to confirm set up.

You may also give by scanning the QR code with an installed app on your phone.



## In Nursing or Retirement Homes

Aldersgate - Dick Metzler  
Asbury - Mary Faye Proctor  
Carmel Hills - Marie Pressley  
Carriage Club - Herman Thomas  
Cypress - Bill and Nancy Budd, Steve and Ellen Byrum, Robert Shore, Olen and Nancy Smith  
Matthews Glen - Anne McMackin, Cara Munday, Anne Rutherford  
Merrywood - Jo Caldwell, Pat Ferguson  
Sharon Towers - Richard and Joan Foard  
Southminster - Kathy Hartley, Kay Hastings, Art Jones, Bobbye Linn, Sally Moore

## Non-Member Deaths

Norma Holt, former member, on October 10, 2022  
Rev. Dr. Homer Craig Phifer Jr., grandfather of Nathan Phifer on October 16, 2022.

# NOVEMBER BIRTHDAYS

1 Katie Barton Addison Roper	5 Mike Hinshaw Robert Reynolds	10 Amanda Barkley Jeremy Caskey David Harris Susan Lemmon	15 Barbara Hall Katelyn Price	20 Charlene McDermott Joe Raible
2 Don Hamburger Lily Kincade Leigh Smith	6 Avery Ellis Susan Flynn Naomi Randall	11 Grant Armistead Mitchell Cooper Tate Hackman Allison Lindsey	16 Bob Cole Katie Cumbus Debbie Pott Rebecca Thompson	21 Jack Stein
3 Jay Pfeifer	7 Reese Horton Fletcher Moore Olen Smith	13 Camille Cumbus Meredith Northan	17 Harrison Liles Andrew Sontag Libby Stuart	23 Jake Canter Georgine Jeffries Megan Tibe
4 Kate Claxton Will Nauman Ed Thomas	9 Fred Cooke Millie Johnston Patricia McLellan Hattie Walton Janet Williams	14 Riley Battle Sharon Raines Karah Ramsey Karey Vera	18 Tracie Northan	24 Jim Glen Reba Hardaway Madeline Lindsey
			19 Maddie Parbst Bruce Walker	25 Robert Salton Grant Sharpe
				26 Maggie Houston
				30 Steve Randall



## CHRISTMAS 2022—FLOWER FUND

This Advent/Christmas season you are invited to make a contribution to the Agnes and Matt Lyle Flower Memorial Fund in memory or honor of a friend or loved one. Your donation will go towards the Flower Memorial Fund and sanctuary flowers. For each donation of \$11.00 the name of your honoree will be printed in the bulletin on Sunday, December 18. Please return this form and your check (payable to SAPC) to the church office. Please designate "Flower Memorial Fund" in the memo line of your check. The deadline is Sunday, December 4. Please print neatly.

Your phone # \_\_\_\_\_ Email address \_\_\_\_\_

Name(s) of giver(s) as you would like it printed in the bulletin. \_\_\_\_\_

In memory \_\_\_\_\_

In honor of \_\_\_\_\_





# CHRISTIAN EDUCATION AND FORMATION

## ADVENT WREATH WORKSHOP

All ages, children through adults, are invited to make Advent wreaths and enjoy light refreshments as we kick-off the Advent season. Wreath kits - \$10 per kit. [Signup to reserve](#) your kit(s). Payment for kits can be made via text to give, online, by check, or in person at the event. The annual Mission Giving Tree will also be available with opportunities to share with some of our Mission Partners.



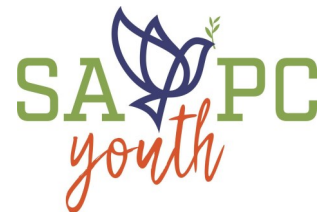
**CHILDRENS CHOIR** We invite children ages 4 through 5<sup>th</sup> grade to join us on November 16 and 30, and December 7, 5:30 – 6pm in the Chapel. There will also be two December Saturday rehearsals. Questions contact Nancy Nutter, [nancyn@selwynpres.org](mailto:nancyn@selwynpres.org).

- ❖ **SUNDAY PRESCHOOL AND NURSERY— 9:30AM, 10:30AM** Our loving nursery keepers care for the children.
- ❖ **CHILDRENS SUNDAY SCHOOL— 9:30AM** Elementary children will gather with Nancy Nutter in the Bowman building.
- ❖ **3RD THROUGH 5TH GRADE BIBLE CLASS** will meet at 9:30am on October 30, and November 6 and 13 in the Bowman building. Participants will be presented with their Bibles on November 13 during the worship service. Questions, contact [Nancy Nutter](#).
- ❖ **YOUTH SUNDAY SCHOOL – 9:30AM** Middle and High School Coffee Talks will meet in the Bates House. Seventh and eighth grade Confirmation Classes meet in the Grace Room of the main building. Contact [Margo Fraga](#) for additional information.
- ❖ **ADULT SUNDAY SCHOOL** Classes are open to members of any age/stage of life and meet on Sundays at 9:30am. Faith Forward (parlor) – based on the Feasting on the Word curriculum, includes scripture reading, prayers, scriptural analysis, application to current issues and optional home reading. It does not require building on what was covered in prior Sunday classes. Taught by Charlie Harris, Erin Mills, Elizabeth Stearns, and Casey Cothran.

Conversations on Faith (library) – examines all aspects of Christian life, including Bible study and contemporary issues. It is discussion-based but does not put you on the spot. No required reading outside of class. Some of the classes will build on previous discussions. Taught by Sue Ward, Susan Lohr, Susan Lemmon, and John Lemmon.

## YOUTH NEWS

- 11/4 - Game Night 6-9 pm (Fellowship Hall)
- 11/6 - No Youth Group
- 11/13 - Second Sunday Service after Worship @11:30 Creek Cleanup
- 11/20 - No Youth Group- MS Retreat in Montreat
- 11/27 - No Youth Group- Advent Workshop after Worship @ 11:30



## PRESBYTERIAN WOMEN

**PRESBYTERIAN WOMEN** All women are invited to join a Circle for Bible study, topics of interest, and service. Contact a Circle leader, Moderator Pam Brownlee, or the church at 704-372-6836 for more information.

- Women of Wonder – First Monday of the month, 12:30pm (parlor) - Ann Copeland, Cacky Newitt
- Peace Seekers – Second Tuesday of the month, 7:15pm - Catherine Miller, Jamie Yearwood
- Our Spiritual Journey – First Tuesday of the month, 10:30am (library)- Bobbie Hankins
- Evening Grace – First Tuesday of the month, 7pm (parlor) - Nancy Bobbitt
- Daughters of Faith – Weekly on Wednesdays, 11am (library)- - Tracie Northan
- Daughters of Faith Evening – Third Monday of the month, 7pm - at Deni Pifer's



## WORSHIP



Communion will be served on November 6 during the 10:30am All Saints Worship Service.

Communion will also be served on the First Sunday of Advent, November 27, during the 10:30am Worship Service.

### SIGN UP TO USHER

Ushering is an easy way to participate in worship and meet new people. Use the QR Code or email [Andy Wertz](mailto:Andy.Wertz@church.org).



**SANCTUARY FLOWERS** You are encouraged to sign up in honor or memory of people or occasions. Contact [Marsha Cooper](mailto:Marsha.Cooper@church.org) to reserve a date. Online payment or checks for \$65 should be made to the church indicating "sanctuary flowers".



Join us weekly for Worship in the Sanctuary at 10:30am. If you cannot attend worship in the sanctuary an email is sent at 10:15am with the [Facebook link](#).

## MISSION

**2nd SUNDAY SERVICE** Church members of all ages are invited to participate in our November 13 service project to clean up a stream. A light lunch for participants will be shared following worship before heading to the Little Sugar Creek Greenway site.



### FIRST SUNDAY FOOD DRIVE

- Purchase requested groceries for the Montclaire Elementary School Pantry.
- Needs are bag rice, bag beans, canned meat, peanut butter, crackers, canned fruits, vegetables, soup, breakfast items, individual wrapped snacks.
- No glass items please.
- Items can be returned to the church the first Sunday of each month or during the week.

### ASSIST MONTCLAIRE ELEMENTARY CHILDREN

There are a variety of commitment levels and ways to assist a Montclaire child or family, including with the Greater Enrichment Program.

Visit the [Sign Up Form](#) or scan the QR code.



### PRESBYTERIAN DISASTER ASSISTANCE

Please join us in praying for those in affected communities. To offer your financial support you may send a check to Selwyn, designating PDA and the specific area in the memo line, or send a check directly to Presbyterian Church USA, PO Box 643700, Pittsburgh, PA 15264-3700, or contact PDA by phone 800- 872-3283.

- For the financial and technical emergency humanitarian response through faith communities for those fleeing Ukraine, please designate your donation to PDA- Ukraine DR000156 in the memo line or text PDAUKR to 41444.
- For PDA response to hurricane relief efforts, please designate your donation to DR000194.



### MAKE HABITAT A HABIT Selwyn's Habitat Work Day November 19

We expect to be painting inside a house at 2707 Primrose Avenue and providing volunteers at Habitat ReStore on Wendover Road.

Camp Habitat for young children will be held at the church so their parents can volunteer.



[Sign up](#) today for any of the volunteer opportunities.



### SAPC STAFF

Lori Archer Raible, *Pastor*  
Margo Richardson Fraga, *Associate Pastor*  
Bryan Hovey, *Parish Associate for Pastoral Care*  
Hillary Cheek, *Parish Associate for Mission*  
Lisa McLennan, *Parish Associate*  
Nancy Nutter, *Director of Children/Family Ministries*  
Fred Spano, *Director of Music*  
Gay Pappin, *Organist*

Marsha Cooper, *Church Administrator*  
Debbie Pott, *Administrative Assistant*  
Tonya Moore, *Church Accountant*  
Reba Hardaway, *Accounting Administrative Assistant*  
Jennifer Dixon Remsen, *Communications*  
Steve Stevenson, *Facilities Coordinator*  
Beth Sharpe, *Director of Child Development Center*

### GROUP CHAIRS

*Administration* - Lou Waple  
*Child Development Center* - Sam Phifer  
*Christian Education & Formation* - Charlie Harris  
*Congregational Life* - Deni Pifer/Ginny Burgin  
*Mission* - Susan Flynn/Chris Bahr  
*Worship* - Suzanne Newsom